

### Material

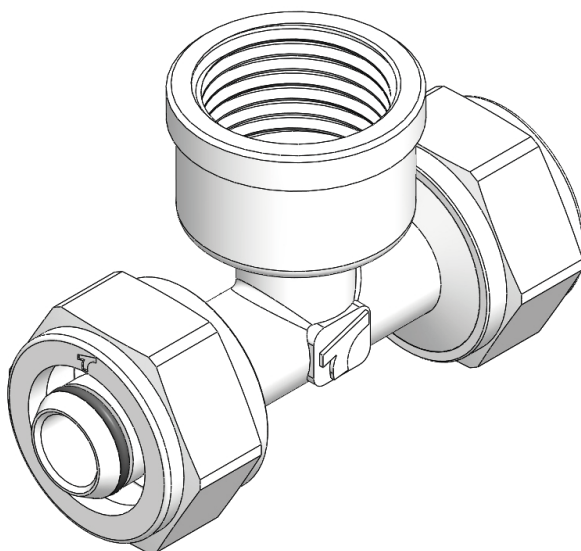
- Main body: pressed brass type CW617, nickel-plated from the outside, on surfaces, which do not have contact with water –  
- full anti-diffusion barrier
- O-ring gasket: EPDM

### Area of application

- Installations of hot & cold tap water
- Central heating (radiator connections)
- Ice water

### Overview

- The connection between the pipe and the fitting is obtained by pressing the pipe into the fitting's profile in the connection area. The pressing occurs when the cut ring is tightened as the nut is tightened with a wrench. The tightness of the connection chamber is guaranteed by two O-rings, perfectly integrated into the joint area. Compression fittings cannot be used in the floor groove or a wall furrow.
- Full anti-diffusion barrier.
- Available in 16-25mm diameter range, as system fittings (tees, elbows, couplings, reducers) and transition fittings with threads.



### Scope of delivery

Main body with sealing and cut rings, nuts